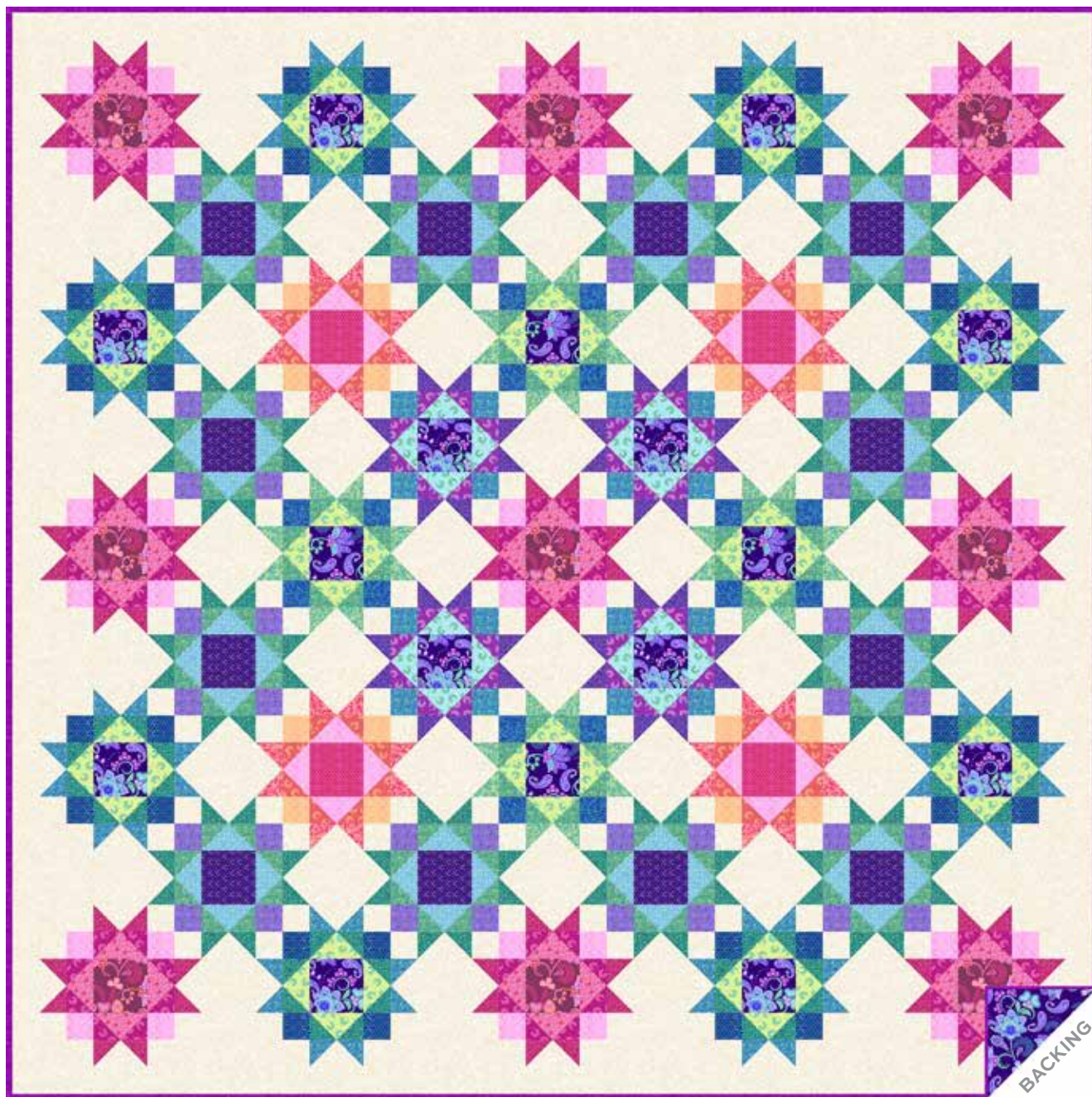


Molly's Magic

SARAH MAXWELL OF DESIGNS BY SARAH J.



Star Garden Quilt designed by: **Sarah J. Maxwell**
Quilt Size: **85" x 85"** • Skill Level: **Advanced Beginner**

Star Garden Quilt

Introducing Andover Fabrics new collection: **MOLLY'S MAGIC** by Sarah Maxwell of Designs by Sarah J.
Quilt designed by Sarah J. Maxwell

Quilt finishes 85" x 85"
25 Blocks: 12" x 12"

An appealing mix of elegant paisley, floral, and geometric prints makes up the stars that are arranged in this lovely setting. The rose and blue blocks are dispersed in a balanced manner for this eye-catching design. Some piecing experience will be useful.

Cutting Directions

Note: Read assembly directions before cutting patches. All measurements are cut sizes and include ¼" seam allowances. A fat ¼ is an 18" x 20"-22" cut. WOF designates the width of fabric from selvedge to selvedge (approximately 42" wide).

Note: Yardage for the fat ¼ and ½ yard prints is generous to allow for switching fabrics if you desire to do so.

Cutting for ONE BLOCK:

Fabric X:

Cut (2) squares 4¼", cut in half diagonally twice to make 8 quarter-square triangles

Cut (4) corner squares 3½"

Center patch:

Cut (1) square 4¾"

Center triangles:

Cut (2) squares 3⅞", cut in half diagonally to make 4 half-square triangles

Side squares:

Cut (4) squares 2⅝"

Star Points:

Cut (2) squares 4¼", cut in half diagonally twice to make 8 quarter-square triangles

8 Triangles:

Cut (2) squares 4¼", cut in half diagonally twice to make 8 quarter-square triangles

Cutting for ENTIRE Quilt

Fabrics A & P from each:

Cut (16) squares 4¾" for block centers

Fabric B

Cut (9) squares 4¾" for block centers

Fabric C

Cut (16) squares 4¼", cut in half diagonally twice to make 64 quarter-square triangles

Cut (16) squares 2⅝"

Making the Quilt

When making the blocks, refer to these labels and the list of fabrics on the last page of the pattern.

A 1500-B	B 1500-E	C 1501-B	D 1501-E
E 1501-G	F 1501-P	G 1502-B	H 1502-E
I 1502-G	J 1502-O	K 1502-P	L 1503-B
M 1503-E	N 1503-LE	O 1503-O	P 1503-P
Q 1504-B	R 1504-E	S 1504-G	T 1504-P
U 1505-B	V 1505-E	W 1505-G	X 1505-L
Y 1505-P			

Fabric Requirements

Fabric	Requirements	Yardage
Fabric N	blocks	⅜ yard
Fabric S	blocks	¾ yard
Fabric X	blocks	3 yards
5 Prints	blocks	½ yard each
	Fabrics A, C, E, I, Q	
16 Fat ¼	blocks	fat ¼ each
	Fabrics B, D, F, G, H, J, K, L, M, O, P, R, T, U, V, W	
Binding (Y)		¾ yard
Backing (A)		8 yards

Fabric D

Cut (18) squares 3⅞", cut in half diagonally to make 36 half-square triangles

Fabric E

Cut (32) squares 4¼", cut in half diagonally twice to make 128 quarter-square triangles

Fabric F

Cut (48) squares 2⅝"

Fabric G

Cut (8) squares 3⅞", cut in half diagonally to make 16 half-square triangles

Fabrics H & R from each:

Cut (18) squares 4¼", cut in half diagonally twice to make 72 quarter-square triangles

Fabrics I & Q from each:

Cut (24) squares 3⅞", cut in half diagonally to make 48 half-square triangles

Star Garden Quilt

Fabrics J, K, T & W from each:

Cut (8) squares $4\frac{1}{4}$ ", cut in half diagonally twice to make 32 quarter-square triangles

Fabric L

Cut (32) squares $2\frac{5}{8}$ "

Fabric M

Cut (4) squares $4\frac{3}{4}$ " for block centers

Fabric N

Cut (8) squares $3\frac{7}{8}$ ", cut in half diagonally to make 16 half-square triangles

Cut (36) squares $2\frac{5}{8}$ "

Fabric O

Cut (16) squares $2\frac{5}{8}$ "

Fabric S

Cut (40) squares $4\frac{1}{4}$ ", cut in half diagonally twice to make 160 quarter-square triangles

Fabric U

Cut (8) squares $4\frac{1}{4}$ ", cut in half diagonally twice to make 32 quarter-square triangles

Cut (16) squares $2\frac{5}{8}$ "

Fabric V

Cut (8) squares $4\frac{1}{4}$ ", cut in half diagonally twice to make 32 quarter-square triangles

Fabric X

Cut (4) squares 19 ", cut in half diagonally twice to make 16 quarter-square triangles

Cut (2) squares 10 ", cut in half diagonally to make 4 half-square triangles

Cut (82) squares $4\frac{1}{4}$ ", cut in half diagonally twice to make 328 quarter-square triangles

Cut (164) squares $3\frac{1}{2}$ "

Binding

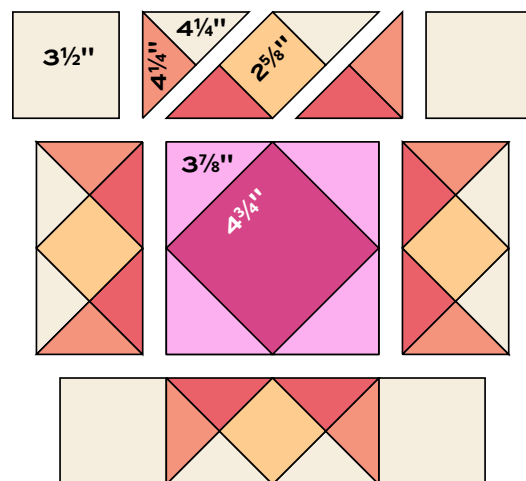
Cut (9) strips $2\frac{1}{2}$ " x WOF for binding

Backing

Cut (3) lengths 32 " x 95 ", pieced to fit quilt top with overlap on all sides

Making the Quilt

1. Refer to Cutting for ONE BLOCK and the individual block diagrams. Select the appropriate triangles and squares for Block 1. Arrange the patches in 3 horizontal rows as shown in the Block Piecing diagram.
2. Fold the $3\frac{7}{8}$ " triangles in half to find the middle of the long side. Mark with a pin. Likewise, fold the $4\frac{3}{4}$ " center square to find the middle of each side and mark with pins. Matching centers, sew a $3\frac{7}{8}$ " triangle to each side of the center square. Press seam allowances away from the center square. The unit should measure $6\frac{1}{2}$ " square from edge to edge. If it does not, adjust your stitching and/or pressing. Set aside.
3. Join the quarter-square $4\frac{1}{4}$ " triangles and the $2\frac{5}{8}$ " squares to make 4 side units. The units should measure $3\frac{1}{2}$ " x $6\frac{1}{2}$ ". Sew side units to opposite sides of the center unit. Sew $3\frac{1}{2}$ " squares to the ends of the remaining side units. Sew to the top and bottom of the center. The block should measure $12\frac{1}{2}$ " square.
4. Refer to the block diagrams to select fabric for each block. Follow steps above to make the number of blocks listed, 41 blocks total. The alphabet letters refer to the list on page 2, the labels on the Block diagrams on page 4 and the fabric thumbnail sheet on page 6.



Block Piecing

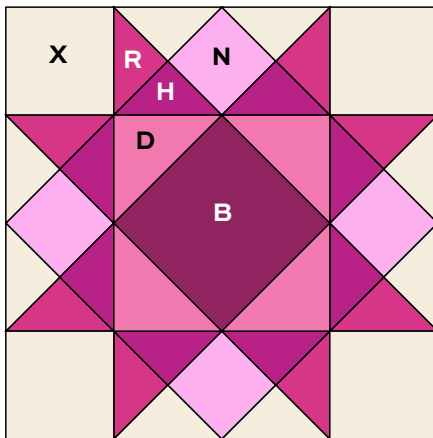
Star Garden Quilt

5. Refer to the Quilt Assembly. Arrange the blocks in diagonal rows. Add Fabric X quarter-square triangles to ends of rows. Stand back or look through a camera to be certain that the blocks are in the correct order. Once you are satisfied, join the blocks into rows, and then join the rows. Sew a Fabric X 10" half-square triangle to each corner.
6. Trim the outer edges of the quilt as needed, leaving 1/4" beyond the block points for adding the binding.

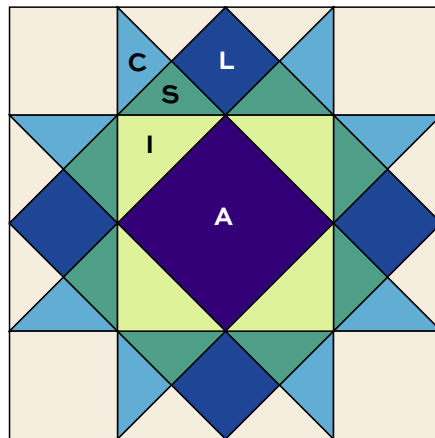
Finishing the Quilt

7. Layer the quilt with batting and backing and baste. Quilt in the ditch around patches. Quilt the Fabric X triangles as you wish. Bind to finish the quilt.

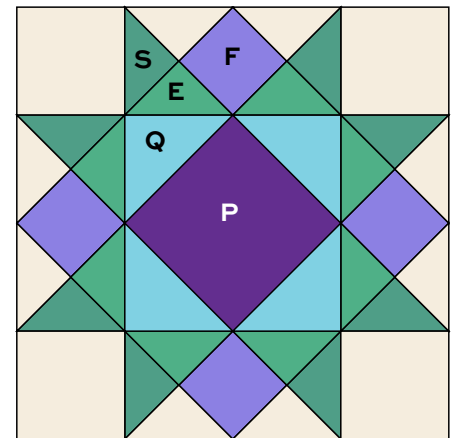
Note: The alphabet letters refer to the list on page 2, the labels on the Block diagrams on page 4 and the fabric thumbnail sheet on page 6.



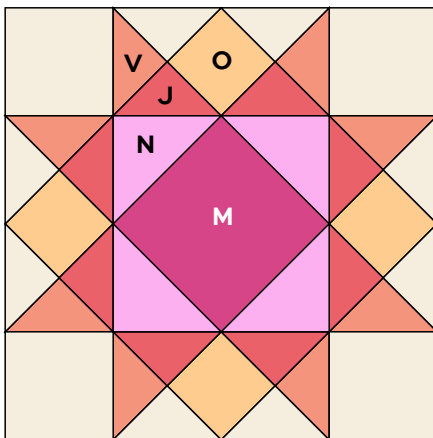
Block 1 – Make 9



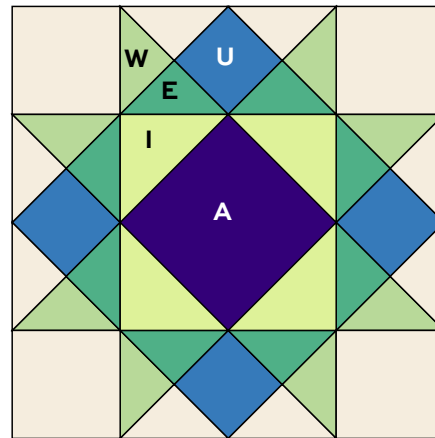
Block 2 – Make 8



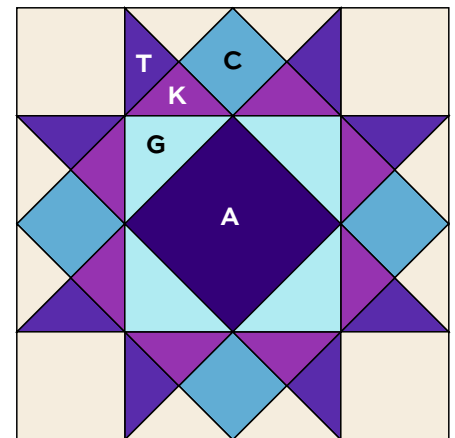
Block 3 – Make 12



Block 4 – Make 4

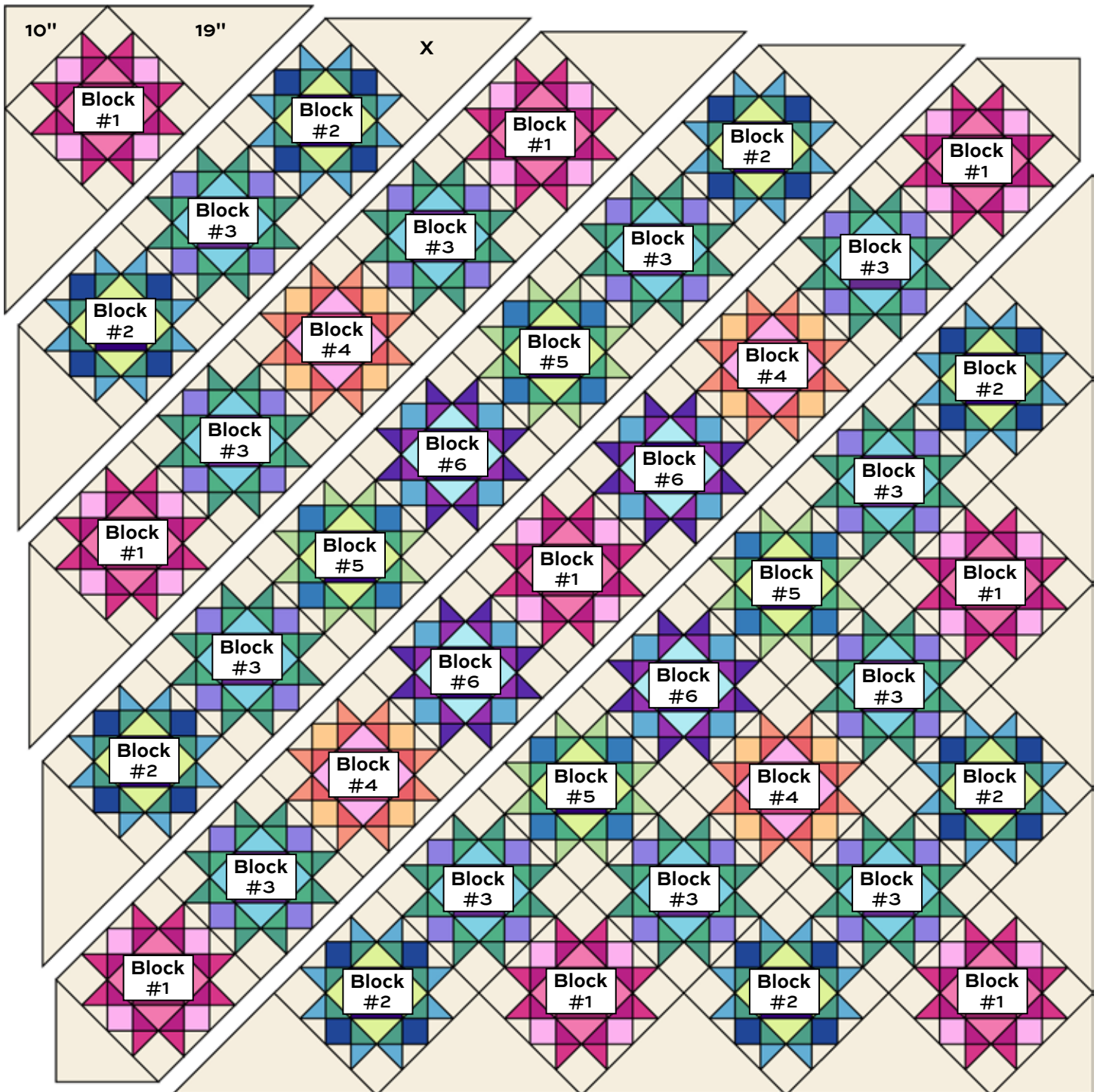


Block 5 – Make 4



Block 6 – Make 4

Star Garden Quilt



Quilt Assembly

Molly's Magic

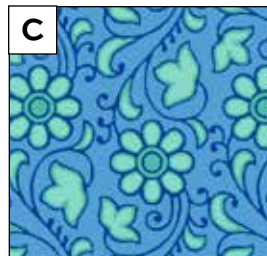
SARAH MAXWELL OF DESIGNS BY SARAH J.



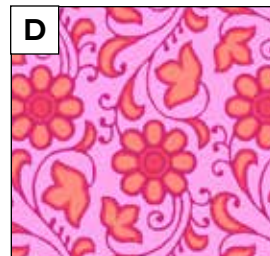
1500-B



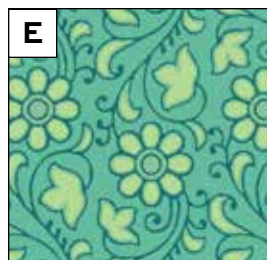
1500-E



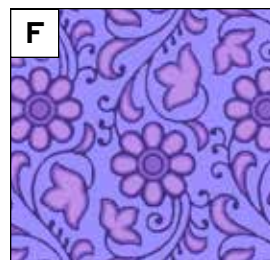
1501-B



1501-E



1501-G



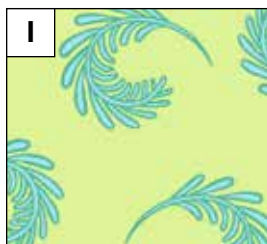
1501-P



1502-B



1502-E



1502-G



1502-O



1502-P



1503-B



1503-E



1503-LE



1503-O



1503-P



1504-B



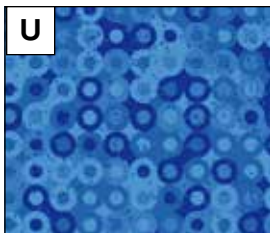
1504-E



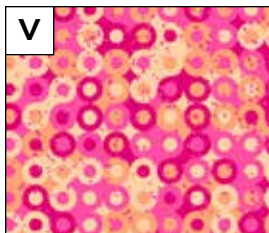
1504-G



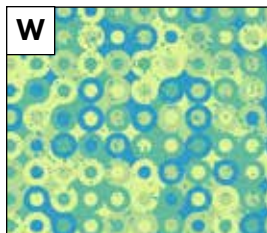
1504-P



1505-B



1505-E



1505-G



1505-L



1505-P

All fabrics fabrics are used in quilt pattern. Fabrics shown are 50% of actual size.

Free Pattern Download Available

1384 Broadway, 24th Floor, New York, NY 10018

Tel. (800) 223-5678 • andoverfabrics.com